

ArcGIS Pro Where to start!



Pros and Cons of ArcGIS Pro

Pros:

- Native 64 Bit architecture
- Ribbon interface
- Can create 3D maps without an extension
- Better integration with ArcGIS Online and Portal for ArcGIS.
- Import map documents (.mxd), scenes (.sxd), and globes (.3DD), models

Cons:

- Not all geoprocessing tools from ArcMap available.
- Cannot export models back to ArcMap.
- Adjusting to new interface
- Some geoprocessing tools use credits from your organizational ArcGIS Online.

Path to a more complete ArcGIS Pro

ArcGIS Pro Roadmap

Near-term

- Metadata (Import, Export and Sharing)
- Reports
- Full motion video
- Real time streaming
- Offset printing
- Presentations
- Scene Layer Editing
- Revit File Support
- Attribute Rule
- More predictive analysis
- Spell Check
- Batch Geoprocessing
- Data Clock Chart

Mid-term

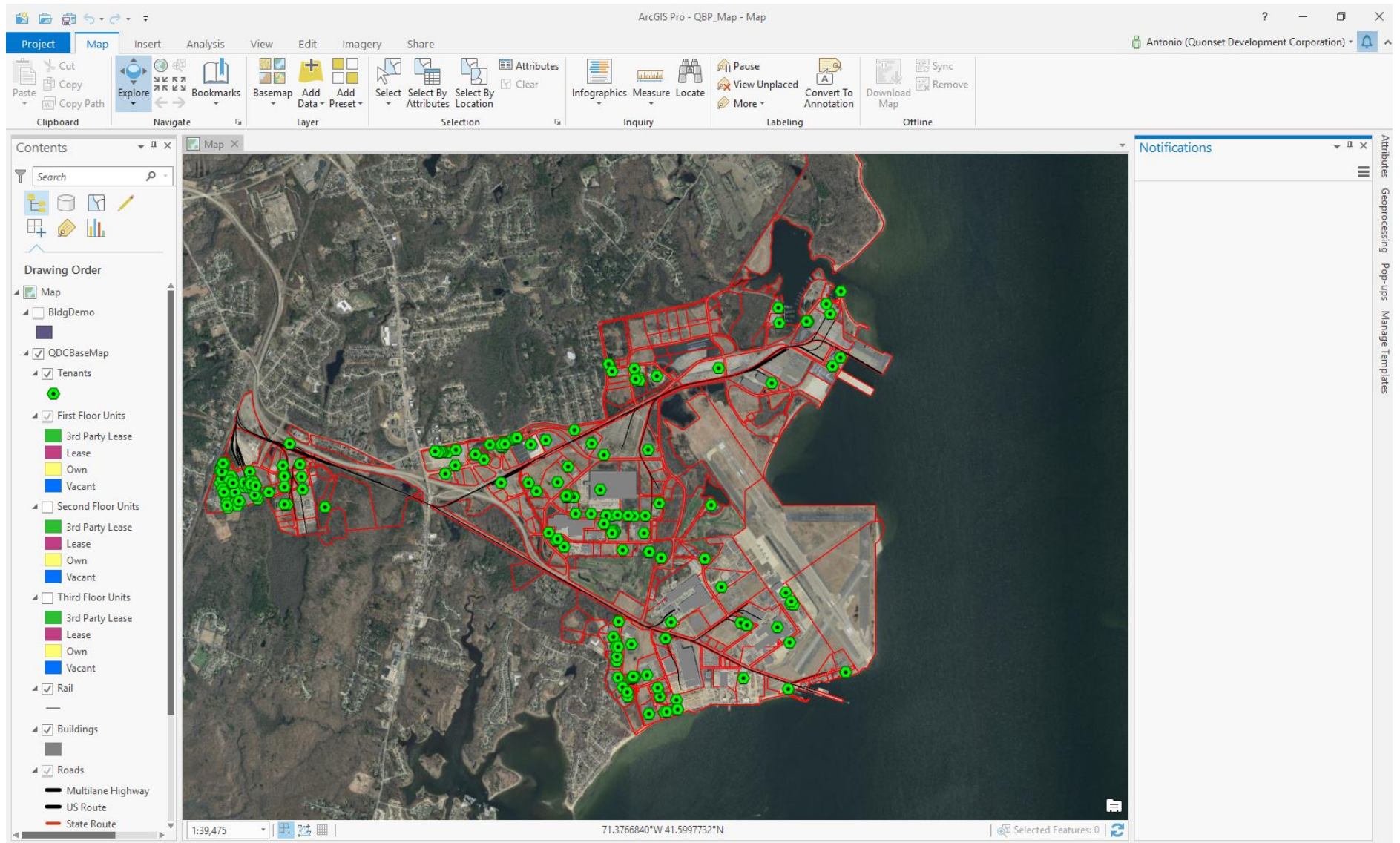
- Parcel Management
- Dynamic Feature Binning and Clustering
- Projects in the Enterprise
- Animated symbols
- Dimensions
- Materials
- 3D Effects
- 3D Interpolation
- GPS Support
- Terrain Editing
- Trend Profile Chart
- Interactive Suitability modeling
- New Extensions

Long-term

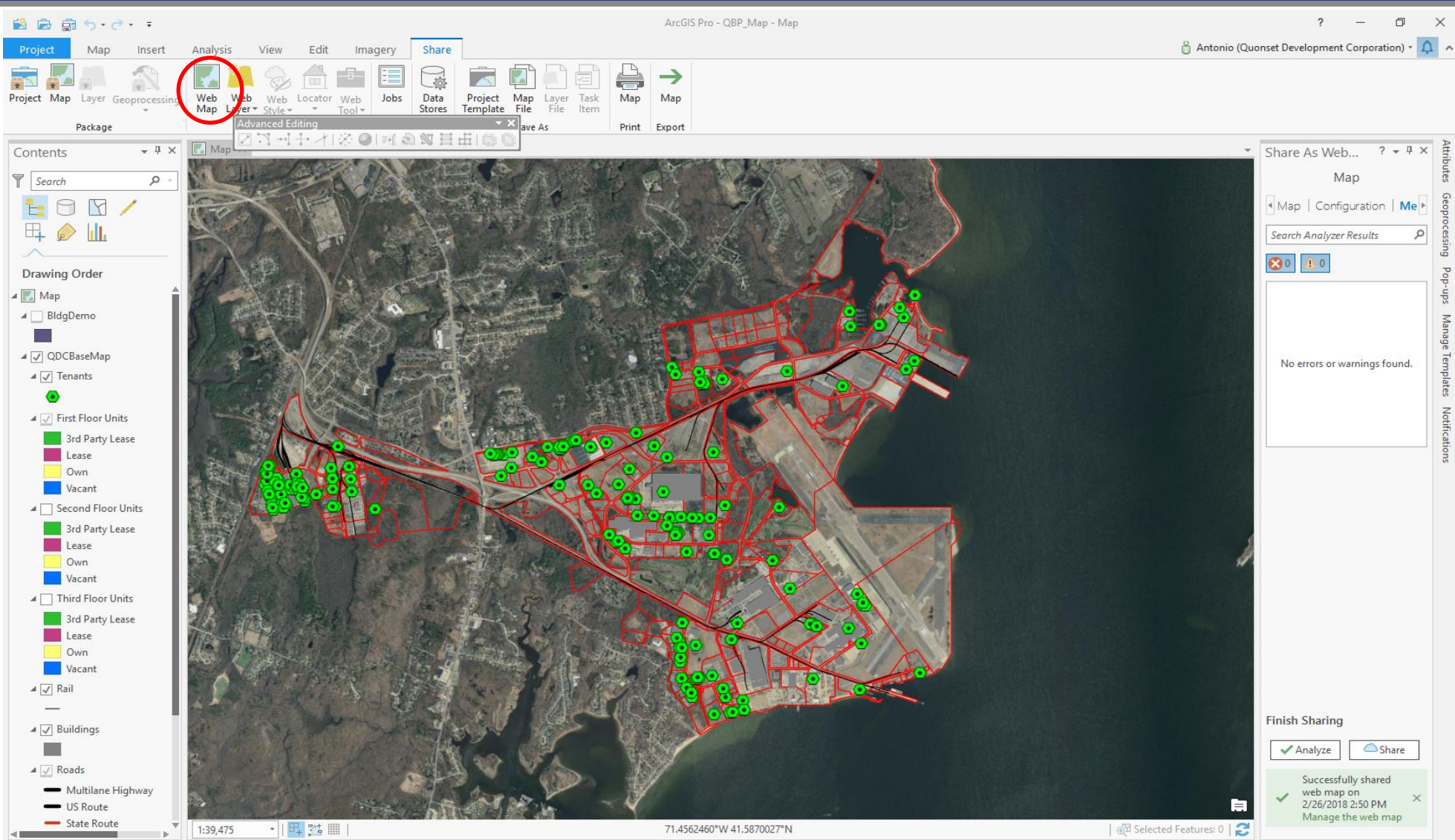
- Physically based rendering
- Geoprocessing in the database
- Distributed desktop processing using Spark
- Space-Time interpolation
- ...

February 2018

ArcGIS Pro – Sharing to ArcGIS Online



Simple and fast! Less errors!



ArcMap – More complicated!!

QDCBaseMap2017.mxd - ArcMap

File Edit View Bookmarks Insert Selection Geoprocessing Customize Windows Help

1:15,000 Roads Spatial Adjustment Labeling Fast

Editor Snapping XTools Pro

Table Of Contents

- Layers
 - Tenants
 - First Floor Units
 - Status
 - 3rd Party Lease
 - Lease
 - Own
 - Vacant
 - Second Floor Units
 - Status
 - 3rd Party Lease
 - Lease
 - Own
 - Vacant
 - Third Floor Units
 - Status
 - 3rd Party Lease
 - Lease
 - Own
 - Vacant
 - Rail
 - Buildings
 - Roads
 - Multilane Highway

Create Features

<Search>

There are no templates to show.

Prepare

0 Errors 14 Warnings 16 Messages Search Analyze Results

Severity	Status	Code	Description	Name	Type	Data Frame
High	Unresolved	20027	Layer uses advanced renderer settings (Feature Service)	Roads	Layer	Layers
Medium	Unresolved	24033	Layer's data source is m-aware	Parcels	Layer	Layers
Medium	Unresolved	24082	Layer's symbol will be downgraded(5 items)			
Medium	Unresolved	24041	Layer does not have a feature template set(5 items)			
Medium	Unresolved	24043	Related layers or tables are not present in the data frame	Layers	Data Frame	Layers
Medium	Unresolved	10045	Map is being published with data copied to the server using data frame full extent	Layers	Data Frame	Layers
Low	Unresolved	30003	Layer draws at all scale ranges(16 items)			

Status: Complete

30/30 Items Show only unresolved items

Drawing

341377.264 194097.37 Feet

ArcGIS Online

it Organization



2

Antonio ▾



My Organization

Search aambrosioqdc80



1 - 16 of 39 in aambrosioqdc80

Sort by: Date Modified ▾ ↓

<input type="checkbox"/>	Title		Modified ▾
<input type="checkbox"/>	QBP_MapTest	Web Map	★ ... Feb 26, 2018
<input type="checkbox"/>	QBP_MapTest_WFL1	Feature Layer (hosted)	★ ... Feb 26, 2018
<input type="checkbox"/>	QBP_MapTest_WFL1	Service Definition	★ ... Feb 26, 2018

DONE!!

Home ▾ QBP_MapTest 


New Map Create Presentation  Antonio ▾

 Details  Add ▾  Basemap  Analysis

 Save ▾  Share  Print ▾  Directions  Measure  Bookmarks

 About  Content  Legend

Contents

- ☐ BldgDemo
- ☒ Tenants
- ☒ First Floor Units
- ☐ Second Floor Units
- ☐ Third Floor Units
- ☒ Rail
- ☒ Buildings
- ☒ Roads
- ☒ Parcels
- ▶ ☒ atlas img 2014
- ▶  World Imagery



Questions? Comments? Advice?



Antonio Ambrosio, GISP
Sr. Technical Specialist/ GIS

401.295.0044

aambrosio@quonset.com