

Coastal Parcel Data
Compilation for CERI:

A Step Closer to Statewide Parcels?

Greg Bonyng
URI Environmental Data Center
greg@edc.uri.edu

Nuts 'n Bolts

- Data Requests
 - Parcel boundaries for 20 communities
 - Basic assessor data from 11 communities
- Data Compilation
 - Data needed a structure...
 - Ultimately adopted some aspects of the RIGIS Parcel Standard
- Next steps
 - Fresh round of data requests?
 - An opportunity to fold in more of the parcel standard

How MA got there

Motivator: "...the needs of the State 911 Department's Next Generation E-911 Project."

MassGIS Data: Standardized Assessors' Parcels

January 2018

MassGIS' standardized "Level 3" assessors' parcel mapping data set contains property (land lot) boundaries and database information from each community's assessor.

Download Parcel data:

By city/town: [From a map](#) | [From a spreadsheet of links](#)

[Request Statewide Data](#)

For app developers:

[Feature layer](#)

[Tile service \(cache\)](#)

View parcel data statewide with the
[Massachusetts Interactive Property Map](#)



<https://docs.digital.mass.gov/dataset/massgis-data-standardized-assessors-parcels>

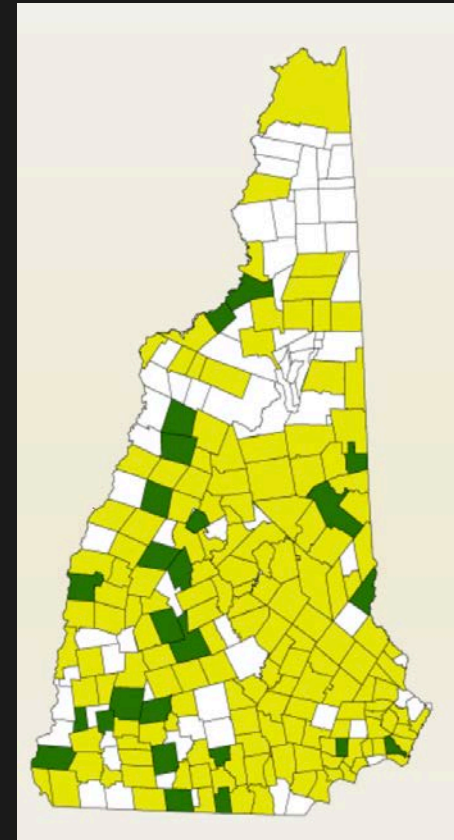
How NH got there

New Hampshire Mosaic Parcel Map Project

NH Dept. of Revenue Administration

UNH Technology Transfer Center

Motivator: “How to place a dollar amount on the collective damage in order to apply for federal disaster relief.”



How VT got there

Vermont Statewide Property Parcel Mapping Program

Property Parcel Data Advisory Board

Vermont Agency of Transportation

Vermont Center for Geographic Information

Creating up-to-date and standardized digital parcel boundary data through partnerships between municipalities, state agencies, and mapping companies.

USEFUL

Joinable to the Grand List at a 99% match rate, providing ownership and assessment information statewide.

UP-TO-DATE

Updates to existing data will be funded no matter how old the data is.

CONVENIENT

Map viewers like the ANR Atlas and E911 Viewer will reflect improved, publicly accessible parcel data.

How might RI get there?

Scenario #1: Full Service

Municipalities share parcel & assessor data as-is with a central body.

The central body...

- Processes data... merging into a statewide dataset?
- Updates metadata.
- Shares with RIGIS for distribution.

Scenario #2: Collaborative

Municipalities...

- Adapt the parcel standard - or – apply a crosswalk.
- Metadata.
- Shares with RIGIS for distribution.

Scenario #3: Self Help

Municipalities...

- Adapt the parcel standard - or - apply a crosswalk.
- Metadata.
- Distribute independently of RIGIS.

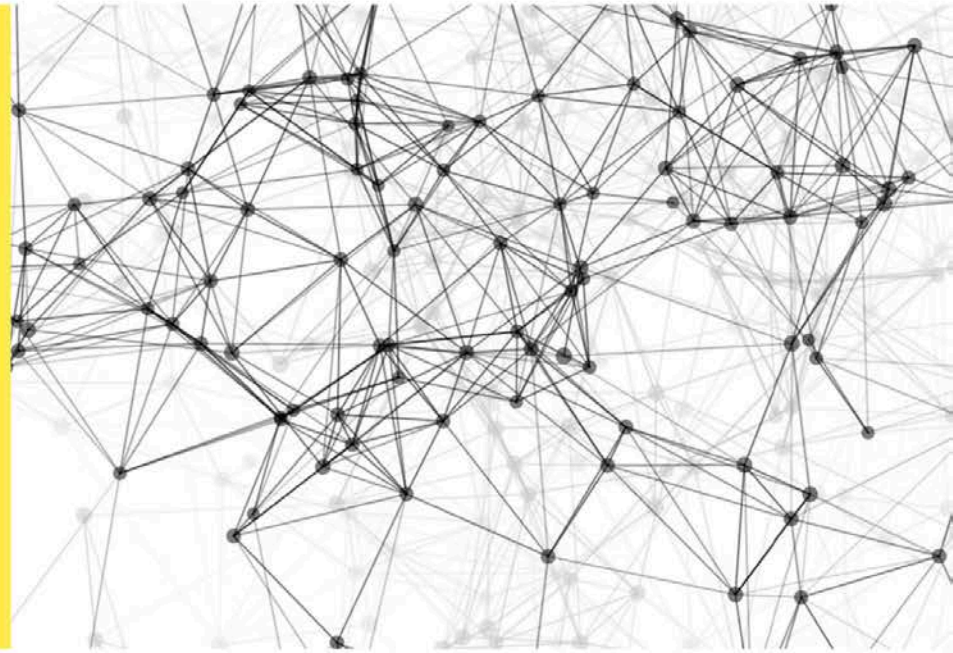
Open Data

/ˈɒpən dɑːdə/

noun

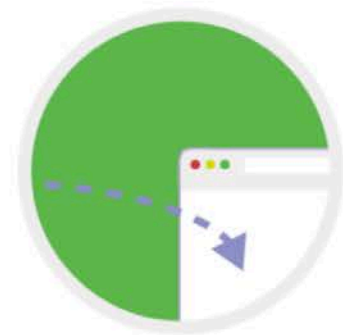
data that can be freely used, re-used and redistributed by anyone.

(Open Definition)

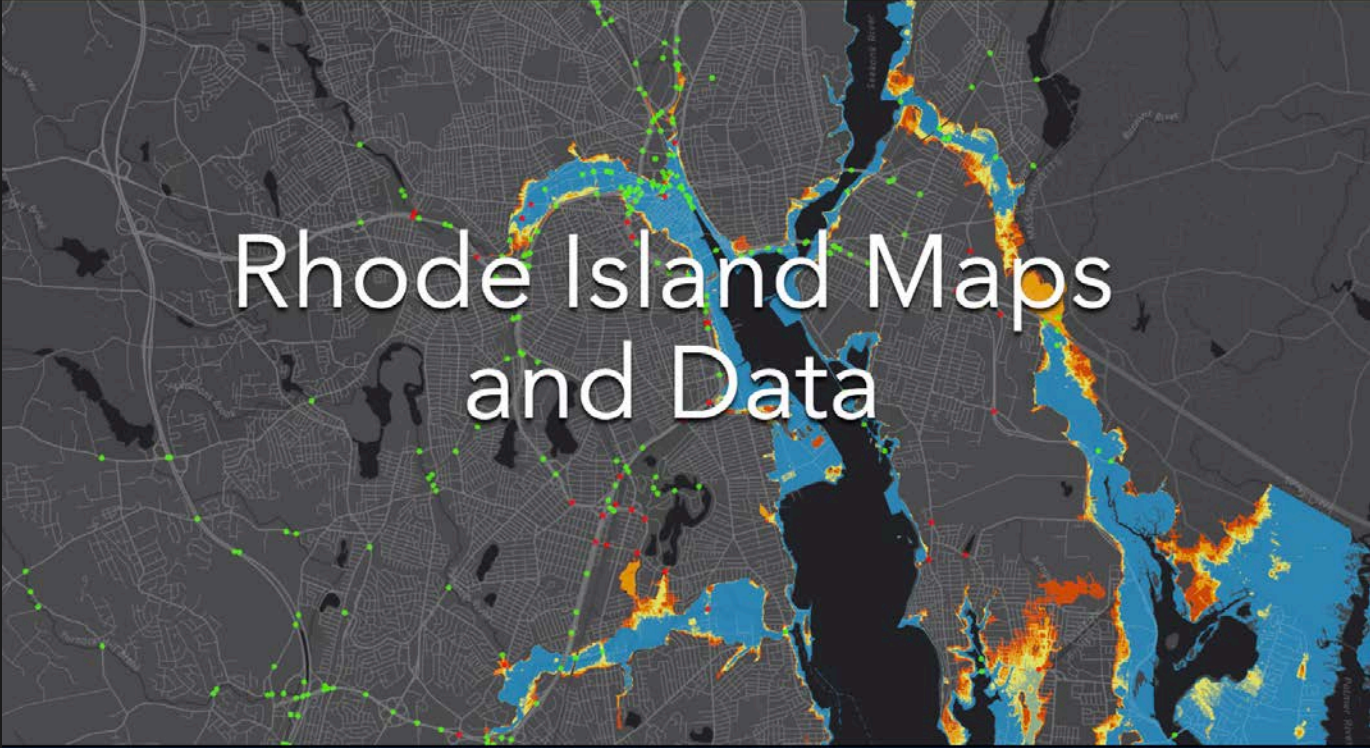


Share Open Data in Minutes

As part of your ArcGIS Online subscription, you can share your authoritative open data. Use your existing ArcGIS Online groups to identify data to share, then quickly set up public-facing websites for people to easily find and download your data in a variety of open formats. Your open datasets are connected to the source and are automatically updated.



<https://hub.arcgis.com/pages/open-data>



Rhode Island Maps and Data

www.rigis.org

data.rigis.org

info.rigis.org

Parcel info portal coming to info.rigis.org

- RIGIS Parcel Standard
- Municipal points of contact
- ArcGIS ModelBuilder script for merging municipal parcels
- Links to other state parcel initiatives
- Notes from today's meeting!

Teresa Crean
tcrean@crc.uri.edu

Greg Bonyngne
greg@edc.uri.edu