



Droning Around Napatree

UNIVERSITY OF RHODE ISLAND ENVIRONMENTAL DATA CENTER



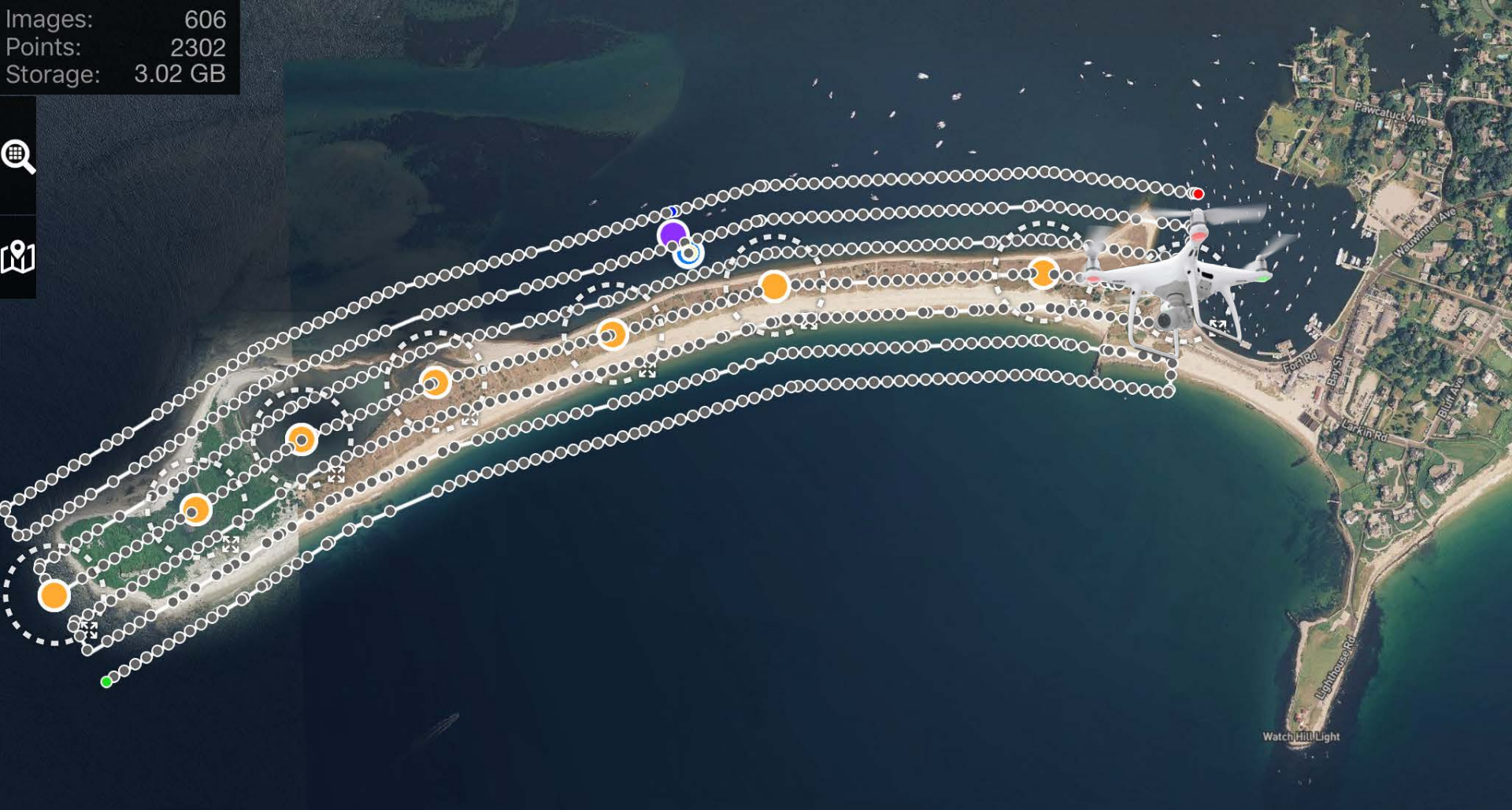
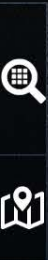


Baseline Mapping of Napatree

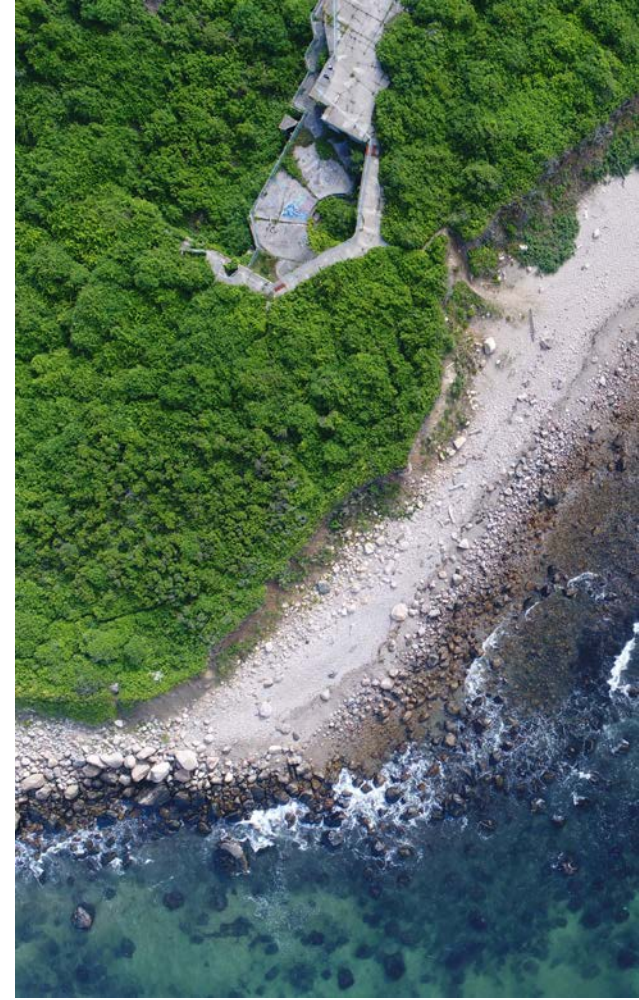


Baseline Mapping of Napatree

Images: 606
Points: 2302
Storage: 3.02 GB



Baseline Mapping of Napatree



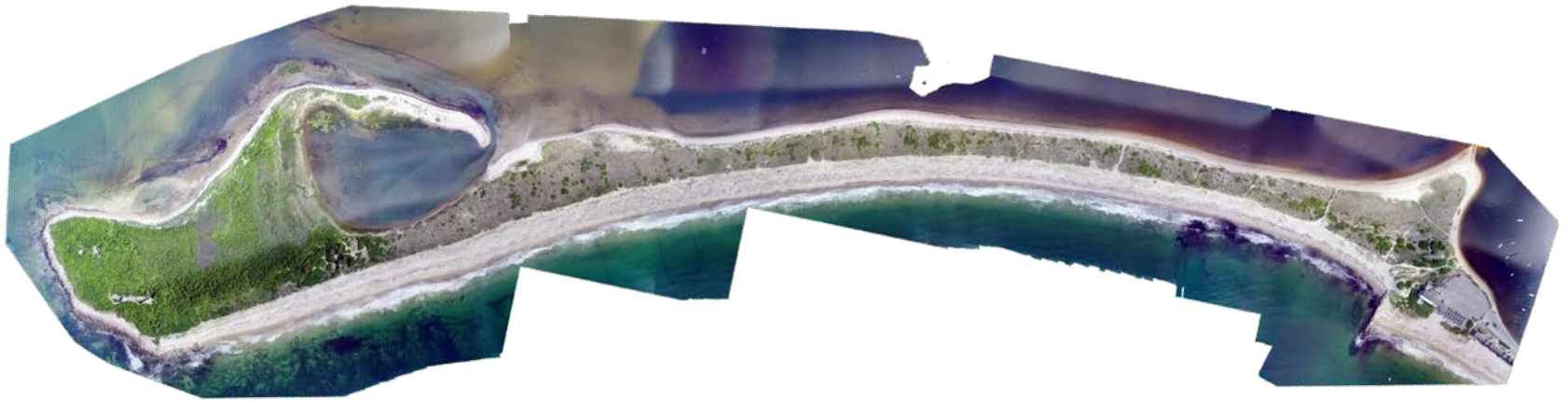
Baseline Mapping of Napatree

Ground Control Points





Baseline Mapping of Napatree



Baseline Mapping of Napatree



SAV Mapping



SAVING



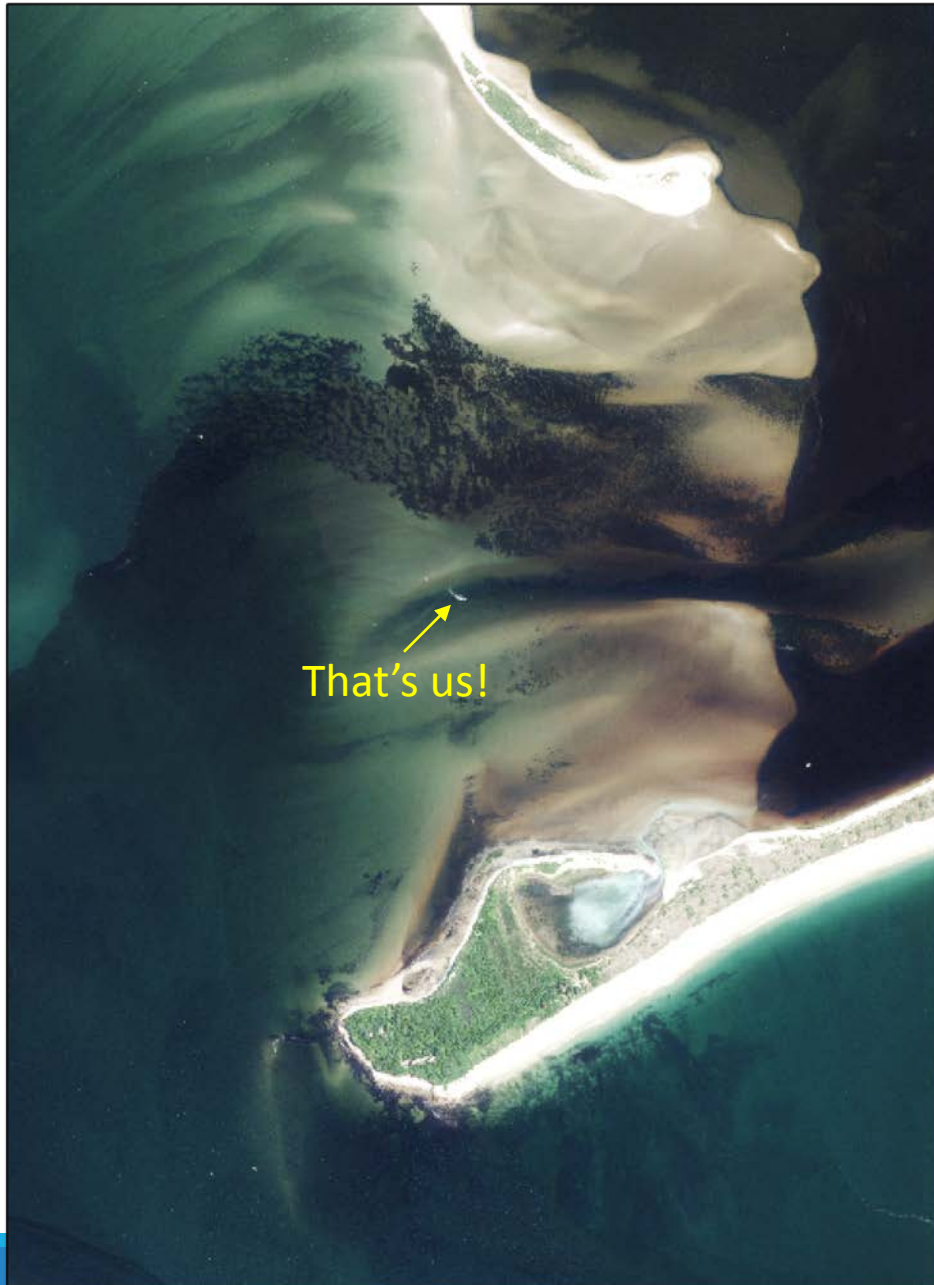
SAV Mapping



SAV Mapping

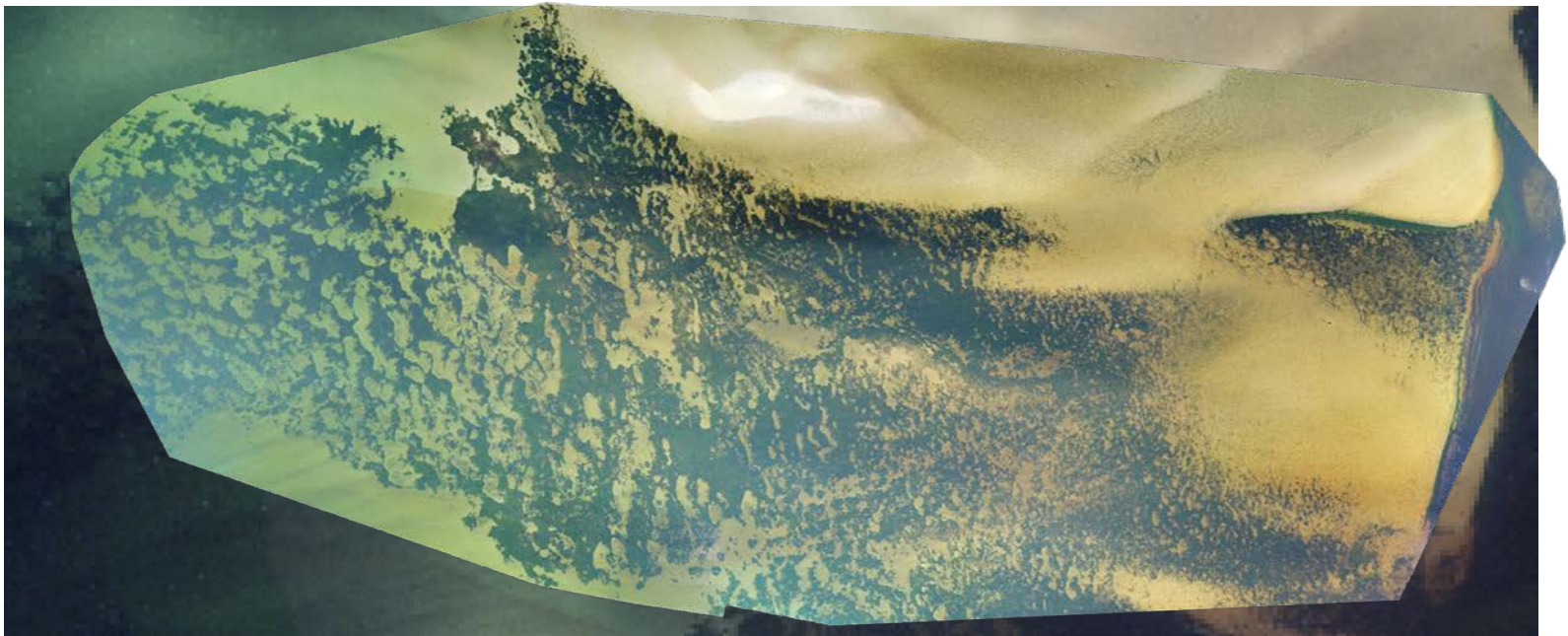


SAV Mapping



Quantum Spatial Ortho

Manned vs Unmanned





Boat Mapping



Boat Mapping



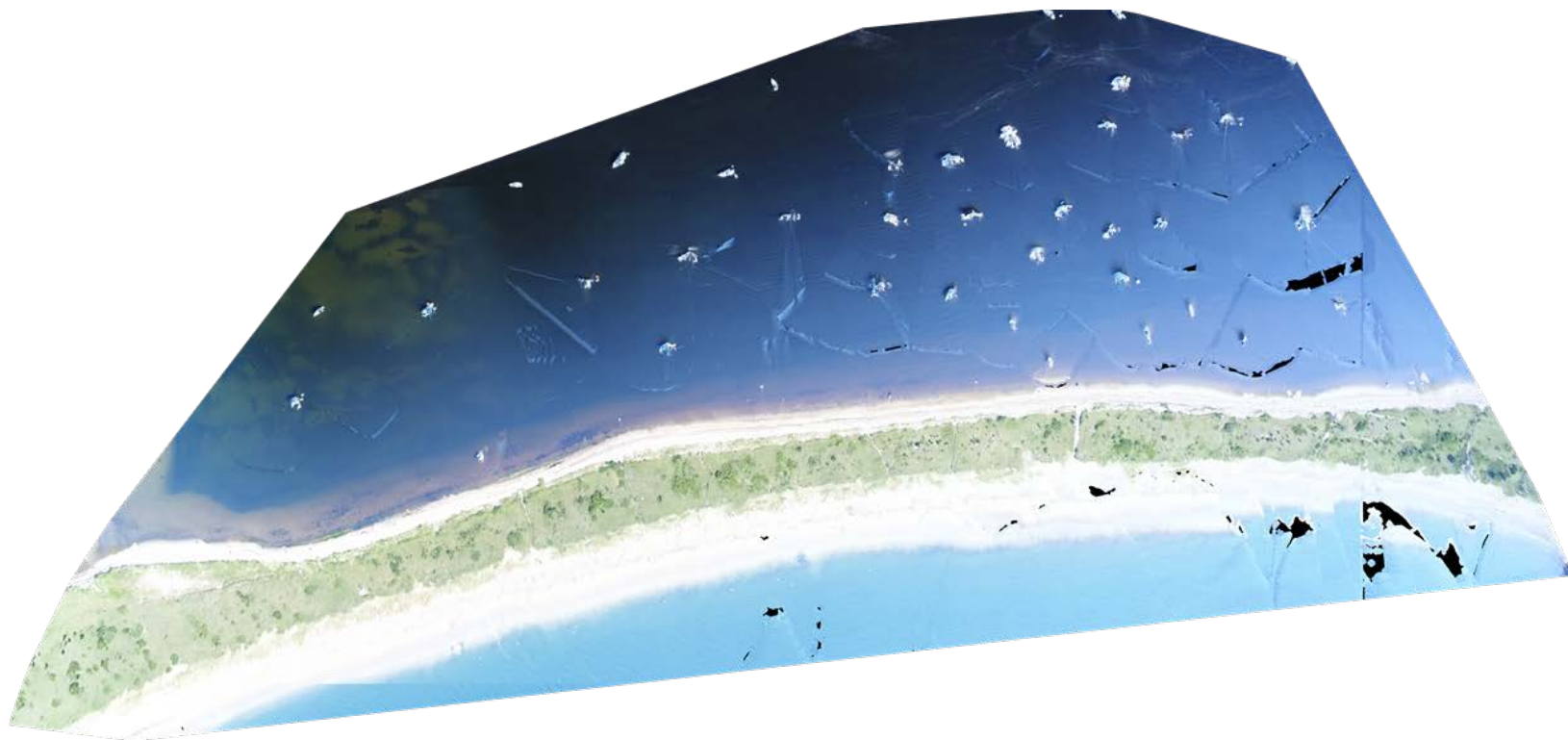
Boat Mapping



Boat Mapping



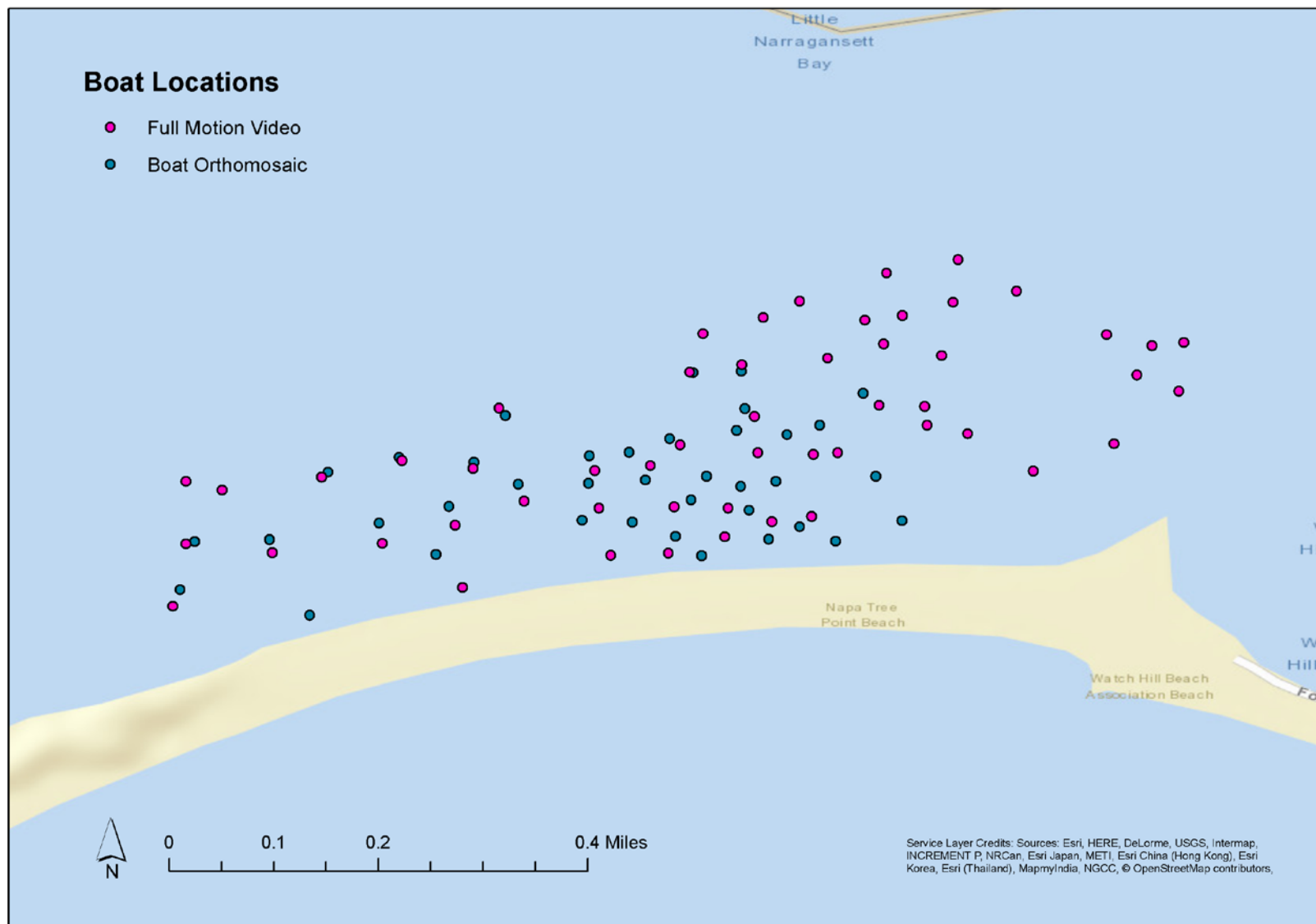
Boat Mapping



Boat Mapping

Boat Locations

- Full Motion Video
- Boat Orthomosaic



Service Layer Credits: Sources: Esri, HERE, DeLorme, USGS, Intermap, INCREMENT P, NRCan, Esri Japan, METI, Esri China (Hong Kong), Esri Korea, Esri (Thailand), MapmyIndia, NGCC, © OpenStreetMap contributors,



Bird Flushing



Bird Flushing

**FID Drone Flight
11 October 2017
All Locations Approximate**

-  Boat/Drone Location
-  Osprey Poles
-  PP&JMS Bird Observer Position
-  Return Flight Pause Locations
-  Flight Line

Bird Flushing

Bird Flushing





Osprey Pole Inspection



Questions?